

# ETHNOCARE™

---

# OVERLAY™



---

# 01    Redefine people's mobility

---

Ethnocare aims to empower individuals to achieve their full potential without limitations. The company is challenging the orthopedic industry by providing innovative solutions that improve users' lives.

In this sense, the company is putting forward the Overlay. Inspired by sportswear technology, this breakthrough transtibial prosthetic device, uses air to manage the changes in limb volume.



## Problem addressed

---



**Dimensional variation** of the residual limb.



**Pressure** points in the socket



**Misalignment** of the limb in the socket



## Our solution The Overlay

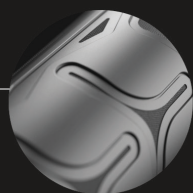
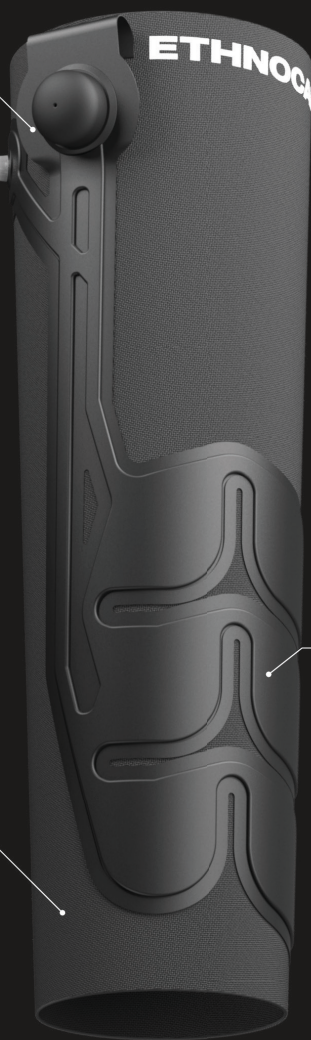
---

The Overlay is a breathable fabric sleeve with an integrated air expansion system that the wearer can adjust for maximum, personalized comfort.

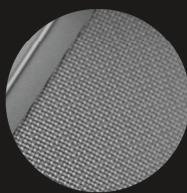
# OVERLAY™



Personalized fit



Air expansion system



Retrofit sizing



watch the video

---

# 02 Overlay's technical details

---

## Personalized fit

---



The Overlay is a stretchy sports textile sleeve featuring a unique air expansion system for a **customized, comfortable and uniform fit** in the socket.

## Air expansion system

---



The Overlay incorporates an **air expansion system** as a replacement for prosthetic stockings, enabling more effective residual limb volume management.

## Retrofit sizing

---



The Overlay incorporates **advanced fabric technology** with a total thickness of just under one millimeter. It's designed to be compatible with most liners and sockets, allowing you to continue using your existing equipment without disruption.

## Suspension method

---



The Overlay can easily be used with the **majority of existing liners** and is **compatible** with distal fixation, suspension sleeves, and passive vacuum systems. It provides amputees with increased **adjustability, mobility,** and freedom to live their best life.

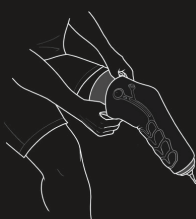
# 03

# How to use



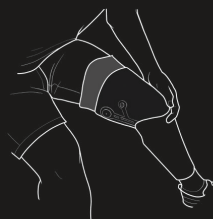
①

Place the liner on the residual limb



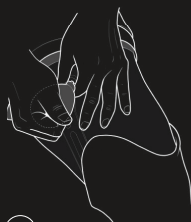
②

Slide the Overlay over the liner with the air expansion system behind the limb



③

The prosthesis can then be slid back on. All the air cells must be in the socket below the trim line.



④

Use the pump to adjust the cushioning as you wish throughout the day.



⑤

You can also use the integrated pump



**Now you are in control !**



Simply deflate the Overlay before removing the prosthesis and the liner.

---

# 04

# Added values

---

The Ethnocare Overlay is a simple and intuitive prosthetic device with adjustable cushioning from 2 to 15 ply.

It can be used through clothing without removing the prosthesis and evenly distributes air within the socket to adapt to different residual limb morphologies.

**Get in contact  
with Ethnocare for  
more information**





## Contact us



Ethnocare.ca



Admin@ethnocare.ca



[https://www.linkedin.com/  
company/ethnocare/](https://www.linkedin.com/company/ethnocare/)



@ethnocare\_canada



ethnocare.ca