



MANUAL
AMBROISE PHOTO MEASUREMENT
UTX AND GENUX

Staalsteden 4-6A, 7547 TA Enschede, the Netherlands
+31 53 4302836 | info@ambroise.nl | www.ambroise.nl
www.youtube.com/AmbroiseHolland | www.facebook.com/AmbroiseHolland

Ambroise photo measurement UTX and GENUX OA

Focus points by the preparation of the photo measurement



A. Fold the poster on the black line and attach it to the wall.



B. Measure 2m distance (80 inch) from the wall.



C. Mark the floor at 2m (80 inch) distance from the wall.



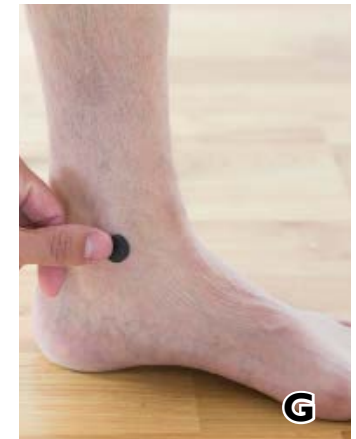
D. Determine the anatomical knee axis



E. Mark knee center at the lateral side of the leg, positioned at the anatomical axis.



F. Mark the lateral malleolus of the ankle. (Only for UTX)



G. Mark the medial malleolus of the ankle. (Only for UTX)



Focus points when taking the photos

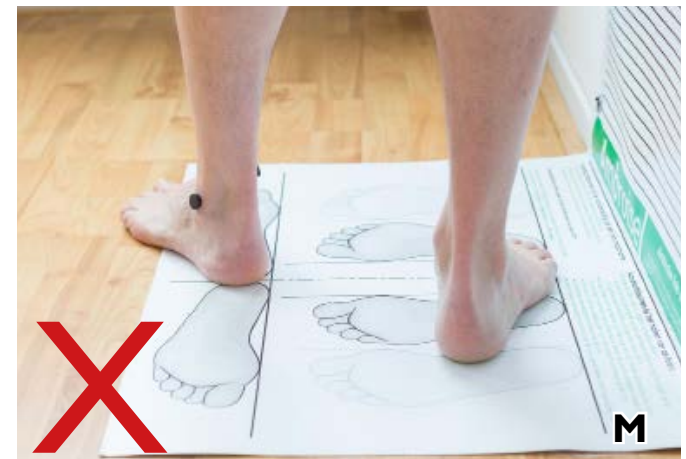
H. Frontal photo: the heel against the line.
Example I is wrong because the heel is not hitting the back line



J. Make sure the feet point straight forward so all the markers are visible while taking the frontal photo, and the leg is not internally or externally rotated.
Example K is wrong because the foot and leg are rotated outwards.



L. Make sure the medial side of the foot hits the line while taking the sagittal photo.
Example M is wrong because the foot doesn't fully touch the line.



N. Take the frontal photo at knee height, 2 meters (80 inch) from the wall. Hold the camera vertically. (Portrait)



Make sure at least 3 of the 4 corner markers on each side of the raster are visible on the photo.

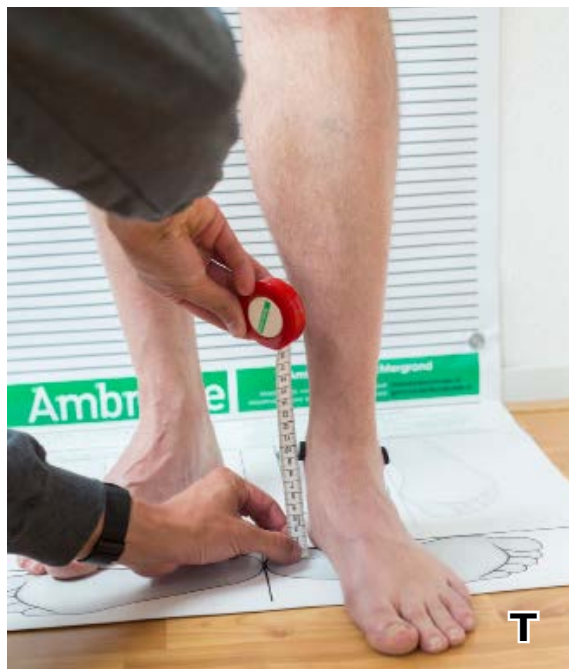
Q. Take the sagittal photo at knee height, 2 meters (18 inch) from the wall. Hold the camera vertically. (Portrait). Result is photo R.



O. Make sure that the legs are fully in frame, from the feet up to the groin.
Example P is wrong because the shirts conceals the groin.



S. Measure distance lateral malleolus till floor.
(Only for UTX)



T. Measure distance medial malleolus till floor.
(Only for UTX)



U. Measure distance lateral malleolus till knee axis.



V. Write the measurements on the measurement form.

Send the form to genuxorder@ambroise.nl or utxorder@ambroise.nl.



Staalsteden 4-6A, 7547 TA Enschede, The Netherlands
+31 53 4302836 | info@ambroise.nl | www.ambroise.nl
www.youtube.com/AmbroiseHolland | www.facebook.com/AmbroiseHolland
